

The background is a grid of various architectural photographs, including modern buildings, interior spaces, and structural details. The grid is color-coded with a gradient: purple and blue at the top, transitioning through green in the middle, and ending in red at the bottom. The text is overlaid on this grid.

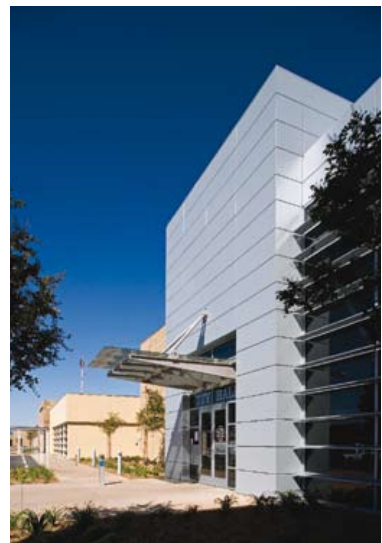
1000x

ARCHITECTURE
OF THE AMERICAS

BRAUN



01



02

VICTORVILLE CITY HALL

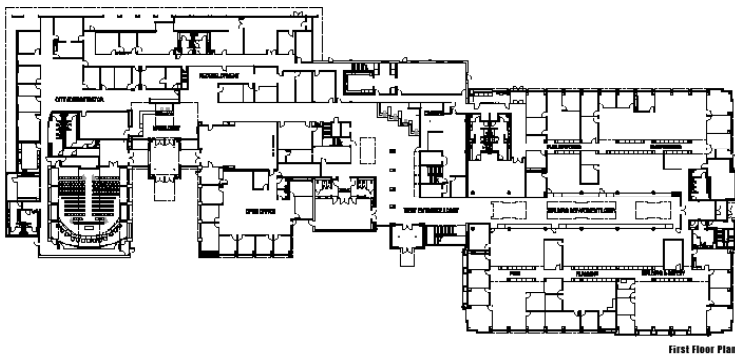
The Victorville City Hall was designed to address its context within a desert environment. An array of photovoltaic panels on the roof provides roughly half of the energy the building needs. Natural light is brought deep into the center of the building by use of open atrium spaces. These spaces also make the departments easily visible and accessible. A highly efficient cooling process was developed to deal with the arid climate. The exterior cladding of desert sandstone and aluminum panels captures the incredible range hues influenced by the surrounding deserts and snow covered mountains.

01 Exterior cladding: desert sandstone 02 Exterior view, detail aluminum panels 03 Interior view 04 First floor plan and elevation 05 Atrium space

Photos: Tom Bonner Photography



03



First Floor Plan



04



05

CITY
Victorville (CA)

COUNTRY
USA

REGION
North America

TYPLOGY
Institution

COMPLETION
2007

WEBSITE
www.tagarch.net

ARCHITECTS
Albert+Racine Architects